

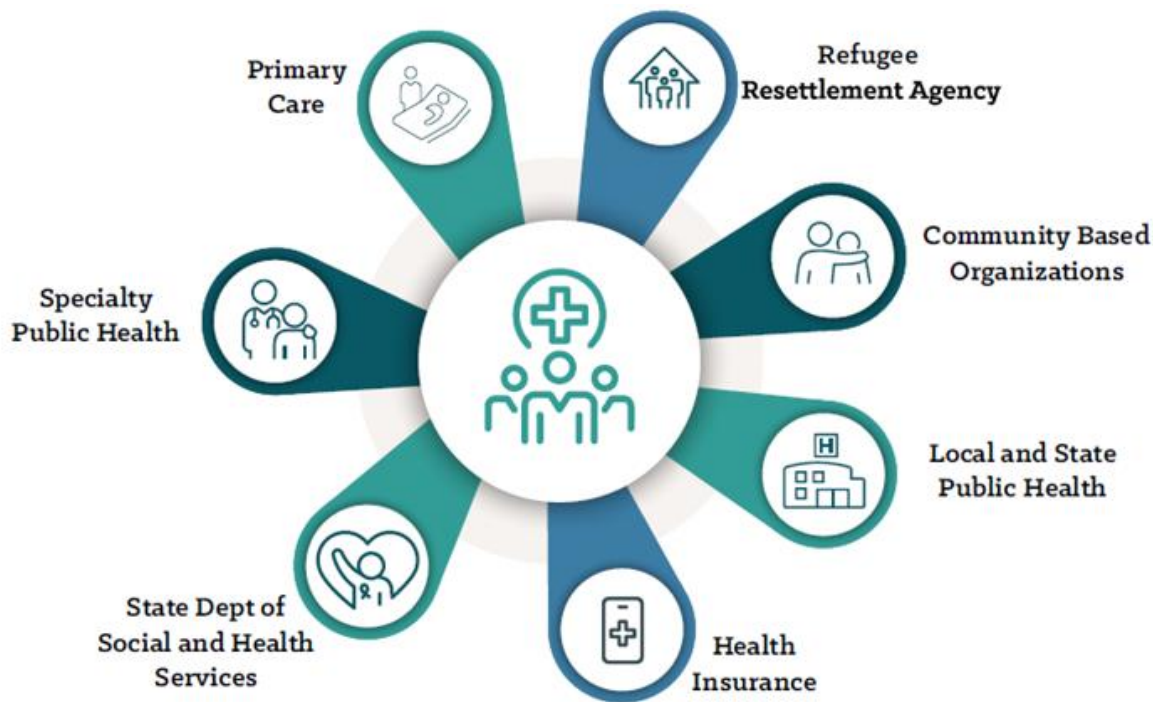


VACCINATIONS FOR REFUGEE COMMUNITIES IN WASHINGTON STATE

Refugee and Immigrant Health Program
Office of Communicable Disease Epidemiology
Division of Disease Control and Health Statistics

WA DOH Refugee and Immigrant Health Program

Mission: Support health and wellness in refugee and immigrant communities in Washington State by cultivating a community of trusted support, health equity centered systems and evidence-based practices.



WA DOH Refugee and Immigrant Health Program: Work Focus

- Surveillance and Evaluation
- Health Systems and Collaboration
- Community Connection

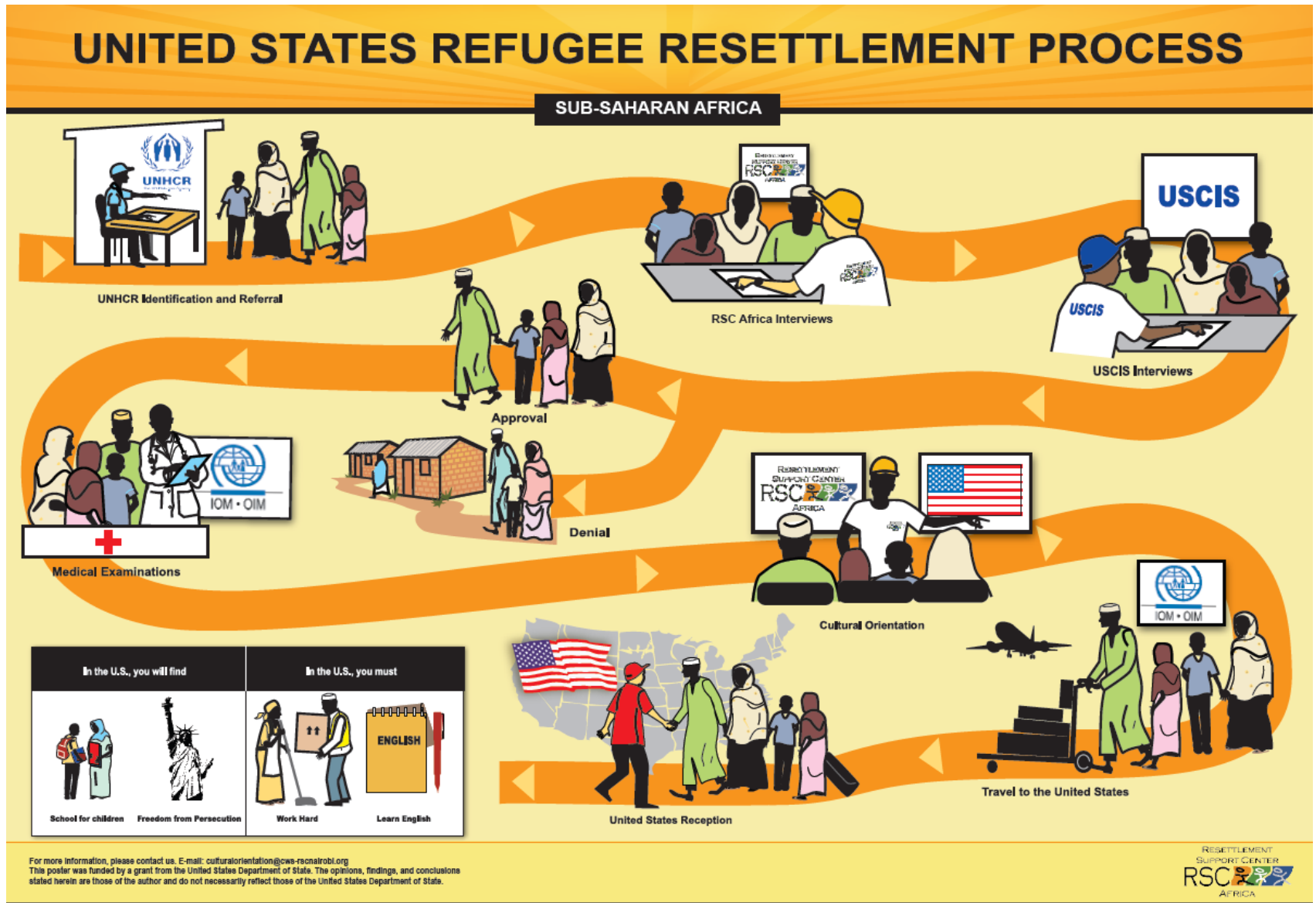
Definition of Refugee

A refugee is someone who has been forced to flee his or her country because of persecution, war, or violence. A refugee has a well-founded fear of persecution on account of race, religion, nationality, political opinion or membership in a particular social group (UNHCR).

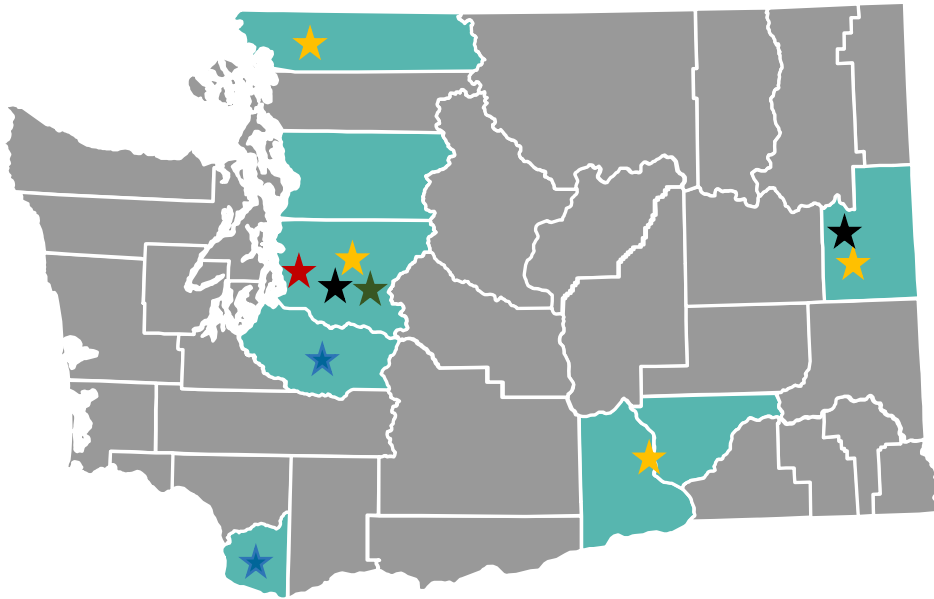
U.S. Refugee Resettlement

- The United States Refugee Act of 1980 created the Federal Refugee Resettlement Program to provide for the effective resettlement of refugees and to assist them in achieving economic self-sufficiency.
- Washington State is home to a diverse refugee community and is one of the top ten states for refugee arrivals.

U.S. Refugee Resettlement Process



Washington State Resettlement Agencies



- ★ World Relief
- ★ Lutheran Community Services NW
- ★ International Rescue Committee
- ★ Episcopal Migration Ministries
- ★ Jewish Family Service

Reception and Placement Program

- Help refugees achieve self-sufficiency, cover basic household expenses, navigate systems, and manage daily tasks.
- Time limited (bridge) for 30 – 90 days after arrival.

Washington State Arrivals

Refugee, Special Immigrant Visa (SIV) and Afghan Placement and Assistance (APA),
FFY2016 to 2022 (year to date)



Sources: State Post-Arrival Demographics Report, Dept. of State, Bureau of Populations, Refugees and Migration
Afghan Placement and Assistance Program - Weekly Departure Status Report

OAW=Operations Allies Welcome

Health Milestones and Immunization Opportunities



Health Milestones – Pre- and Post-Arrival

Before arrival



Immigration
Medical Screening



Resettlement
in Washington



Health
Insurance



Refugee Health
Screening



Primary Care



Immigration
Adjustment of
status (I-693)

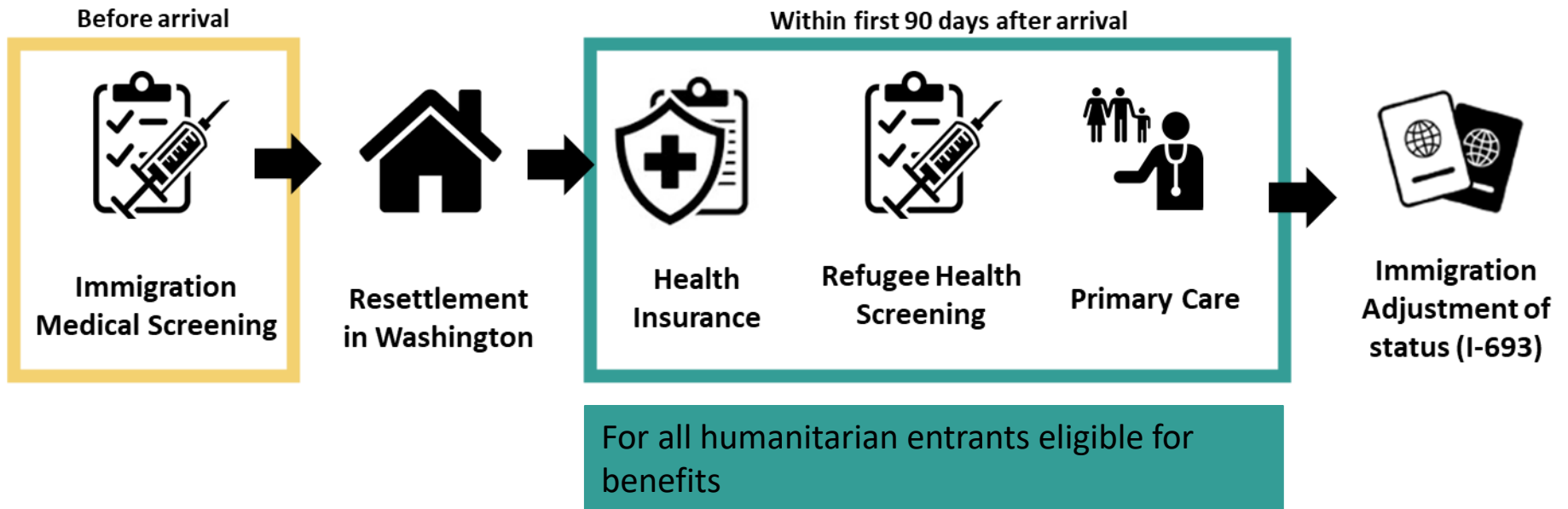
Dependent upon visa type

Vaccination Program for U.S.-bound Refugees: Immunization Schedule (updated January 2021)

| Age group | Vaccines and doses |
|-------------------------|--|
| Birth-adult | Hep B x 2 |
| 7 yrs – adult | Td x 2 MenACWY x 1 |
| ≥1 yr and born ≥1957 | MMR x 2 Varicella x 1 |
| 6wks - <15 wks | Rotavirus x2 |
| 6 wks - <5 yrs | Hib (x 2 if <15 mos; x 1 if 15 mos - 5 yrs) PCV (x 2 if <2 yrs; x 1 if 2 - 5 yrs) |
| 6 wks - <7 yrs | DTP x 1 |
| 6 wks - <11 yrs | Polio x 2 |
| Any eligible age groups | COVID-19 |

Source: [Overseas Refugee Health Guidance | Immigrant and Refugee Health | CDC](#),
Accessed 10/19/22

Health Milestones – Pre- and Post-Arrival



Health Insurance

Apple Health managed care

Service area map - January 2021

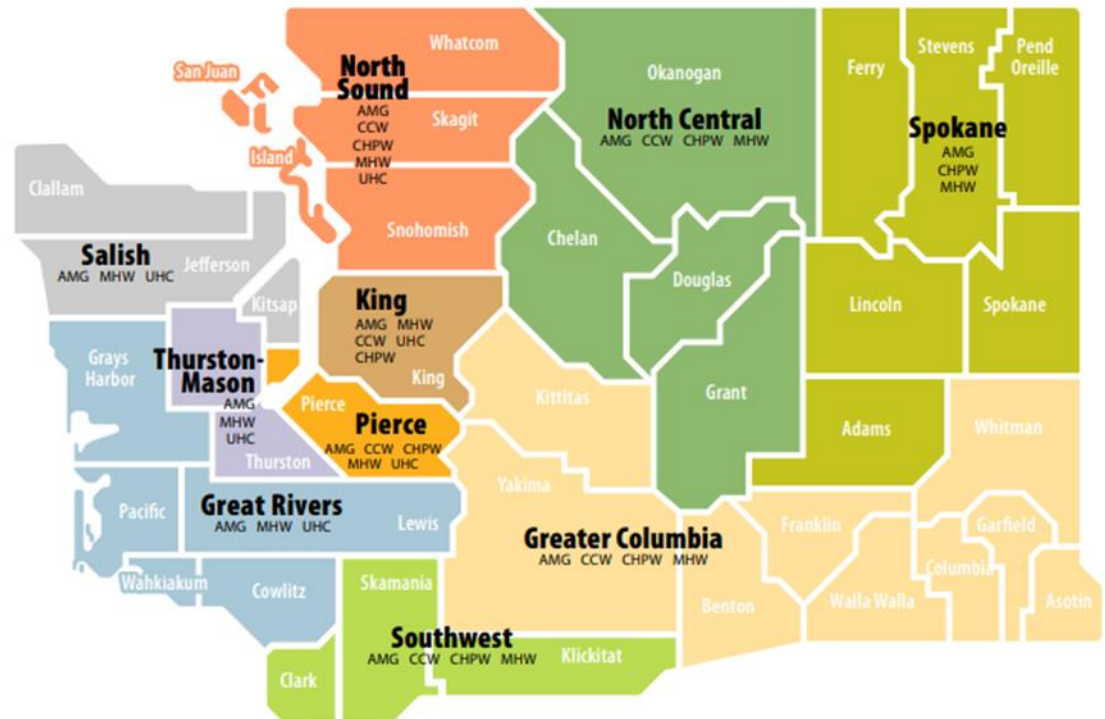
Health plans offered

| | |
|------|---------------------------------------|
| AMG | - Amerigroup Washington |
| CCW | - Coordinated Care of Washington |
| CHPW | - Community Health Plan of Washington |
| MHW | - Molina Healthcare of Washington |
| UHC | - UnitedHealthcare Community Plan |

Integrated managed care regions

| | |
|------------------|----------------------|
| Greater Columbia | Thurston-Mason |
| King | Salish |
| North Sound | Great Rivers |
| Pierce | Southwest Washington |
| Spokane | North Central |

 Apple Health Foster Care (statewide)*



Sources:

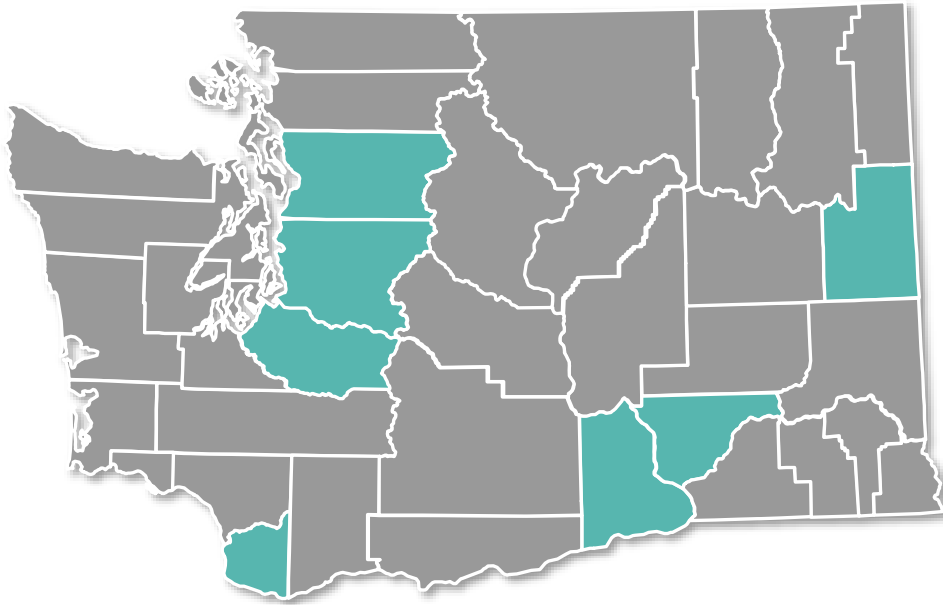
https://www.hca.wa.gov/assets/free-or-low-cost/service_area_map.pdf

https://www.hca.wa.gov/assets/free-or-low-cost/citizenship_alien_status_guide.pdf

Domestic Medical Exam

- The domestic medical exam (DME) is a key step on the path to wellness for newcomer arrivals to Washington state.
- Through partnership between resettlement agency case workers, [refugee health screening clinics](#), and other stakeholders, newcomer arrivals are connected to the DME within 30 to 90 days post-arrival.
- The purpose of DME is to:
 - Follow-up on any conditions identified overseas
 - Identify conditions that could impact individuals as they resettle
 - **Provide immunizations** to ensure individuals and communities are protected from vaccine preventable diseases and meet post-resettlement requirements
 - Connect individual to a primary care home

Refugee Health Screening Clinics



Snohomish Health District

**Public Health Seattle & King
County**

**Tacoma Pierce County Health
Department**

**Sea Mar Community Health
Centers, Vancouver**

Benton-Franklin Health District

Unify Community Health, Spokane

Harborview Medical Center

Health Milestones – Pre- and Post-Arrival

Before arrival



Immigration
Medical Screening



Resettlement
in Washington



Health
Insurance



Refugee Health
Screening



Primary Care



Immigration
Adjustment of
status (I-693)

Within first 90 days after arrival

12 months after arrival

Dependent upon visa type.
Only visas which allow for adjustment
of status complete the I-693.

Immigration Adjustment of Status vs. Other Vaccine Requirements

| ACIP-Recommended Antigens | Immigration Adjustment of Status* | WA State School Entry | Uniting for Ukraine Attestation ** |
|--------------------------------|---|-----------------------------|---|
| COVID-19 | X | | X |
| Diphtheria, Tetanus, Pertussis | X | X | |
| H. influenzae type B | X | X | |
| Hepatitis A | X | | |
| Hepatitis B | X | X | |
| Measles, Mumps, Rubella | X | X | X |
| Meningococcal | X | | |
| Pneumococcal | X | X | |
| Poliovirus | X | X | X |
| Rotavirus | X | | |
| Seasonal Influenza | X | | |
| Varicella | X | X | |

* post-arrival requirement: up-to-date; ** overseas or post-arrival requirement: at least one dose

Sources:

- [Vaccination Technical Instructions for Civil Surgeons | CDC](#)
- [Uniting for Ukraine Vaccine Attestation | USCIS](#)
- [School and Child Care Immunization | Washington State Department of Health](#)

Persons Vaccinated Outside U.S. and Overseas Records

Validity of Overseas Vaccination Records

- ACIP General Best Practice Guidelines for Immunization: Special Situations, Table <https://www.cdc.gov/vaccines/hcp/acip-recs/general-recs/special-situations.html>
- Immunization Action Coalition - Ask the Experts: Vaccine Recommendations <https://www.immunize.org/askexperts/documenting-vaccination.asp>

Documenting Vaccination

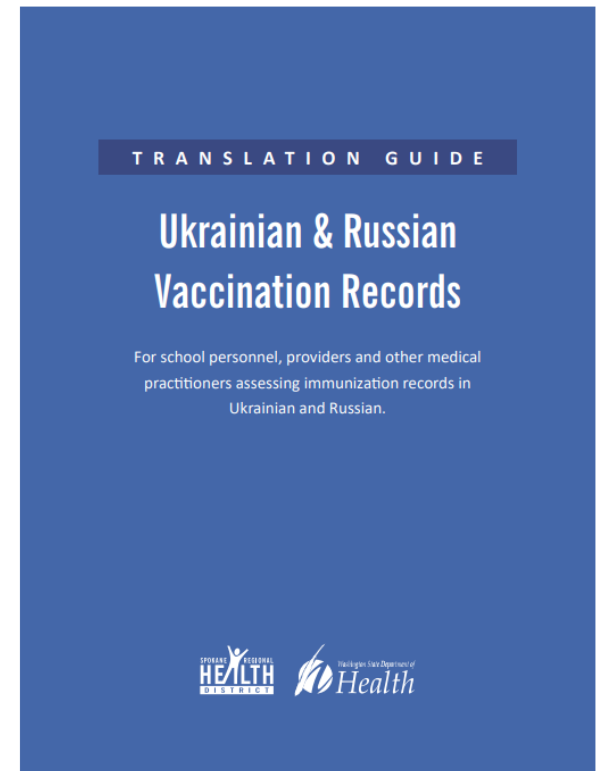
- Immunization Action Coalition - Ask the Experts <https://www.immunize.org/askexperts/documenting-vaccination.asp>

Vaccine-Preventable Disease Terms in Multiple Languages

- CDC Pink Book, Appendix 9 www.cdc.gov/vaccines/pubs/pinkbook/downloads/appendices/B/foreign-products-tables.pdf

Vaccination Record Translation Guide Ukrainian and Russian

- SRHD Translation Guide: Ukrainian and Russian Vaccination Records:
<https://srhd.org/media/documents/Ukraine-Vaccine-Record-Interpretation.pdf>
- Webinar for school personnel, providers and other medical practitioners assessing immunization records in Ukrainian and Russian
<https://youtu.be/WiXtkSEPBmM>
- Vax4School.org
 - Volunteer assistance with vaccine record translation



Selected Resources



WA DOH Refugee and Immigrant Health Program

www.doh.wa.gov/RefugeeHealth

- Background on program and refugee resettlement
- Domestic medical exam
- Resources for emerging communities
 - Fact sheets, Health insurance and benefits eligibility, etc
 - Health education and promotion materials with translations
 - Health and Cultural Trainings/Webinars for providers
 - Epidemiology profiles that include immunization outcomes

Selected Immunization-Related Resources

- Building Confidence in COVID-19 Vaccines: Discussion Guide for Refugees and Immigrants
<https://doh.wa.gov/sites/default/files/legacy/Documents/1600/coronavirus/820-191-BuildingConfidenceDiscussionGuide.pdf>
- WA DOH Care-A-Van - mobile COVID-19 vaccination clinic
<https://doh.wa.gov/emergencies/covid-19/vaccine-information/care-van>
- Spokane Regional Health District Translation Guide: Ukrainian and Russian Vaccination Records:
<https://srhd.org/media/documents/Ukraine-Vaccine-Record-Interpretation.pdf>
- Ukrainian and Russian Community [Vaccine Outreach Toolkit](#)
- WithinReach [e-Course](#): Fostering COVID-19 Vaccine Confidence in Russian and Ukrainian Speaking Communities (includes CE credits)
- National Resource Center for Refugees, Immigrants and Migrants
<https://nrcrim.org/>
 - Example of a resource page created in partnership with WA DOH and the Former Soviet Union Task Force
<https://nrcrim.org/ukrainian-refugee-crisis-response-actively-and-authentically-engaging-communities-outbreak-response>



Refugee and Immigrant Health Program
Office of Communicable Disease Epidemiology
Washington State Department of Health
206-418-5500

refugeehealthprogram@doh.wa.gov

www.doh.wa.gov/RefugeeHealth



handle: WADeptHealth



For persons with disabilities, this document is available in other formats.
Please call 711 Washington Relay Service or email civil.rights@doh.wa.gov.