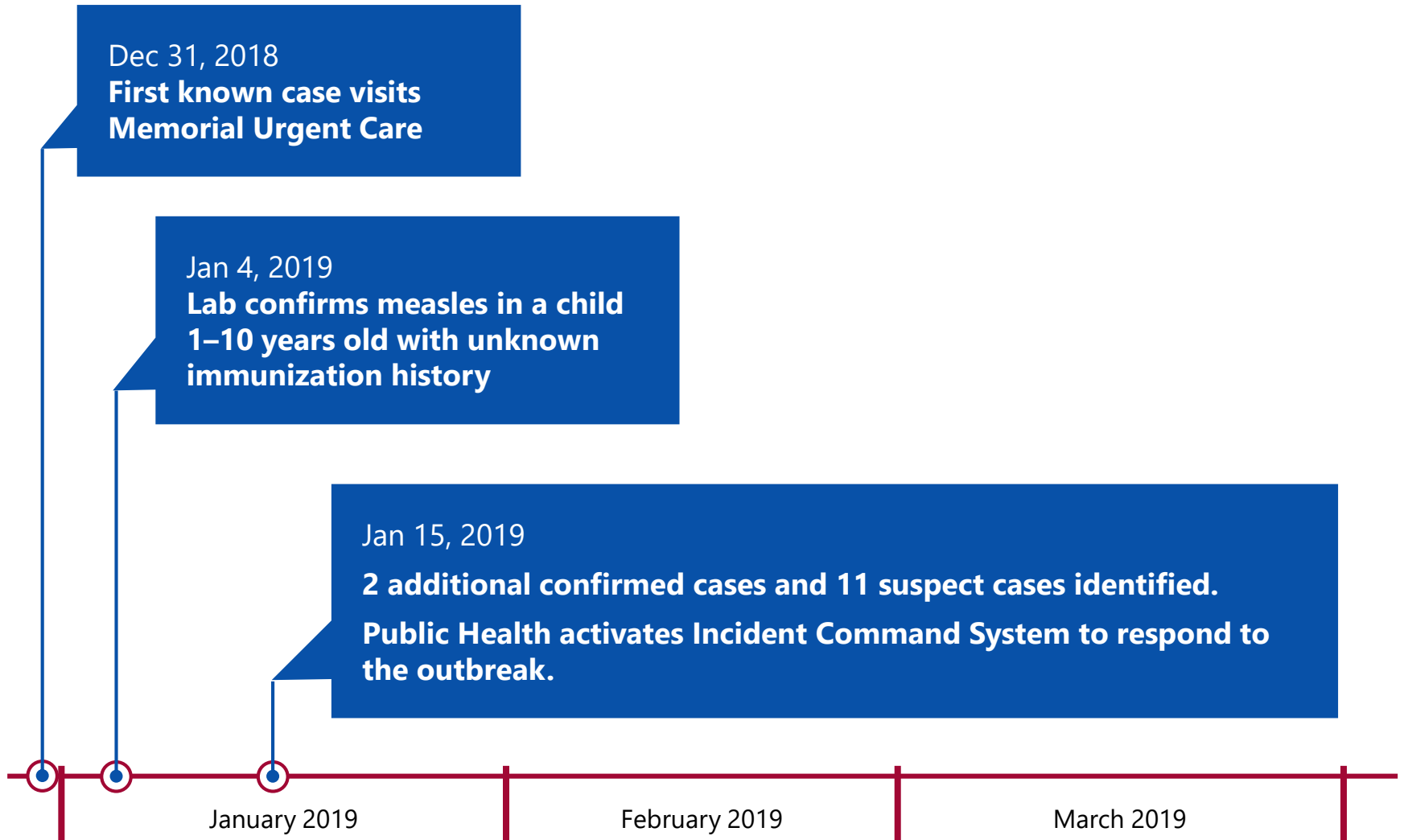


2019 Clark County Measles Outbreak Summary

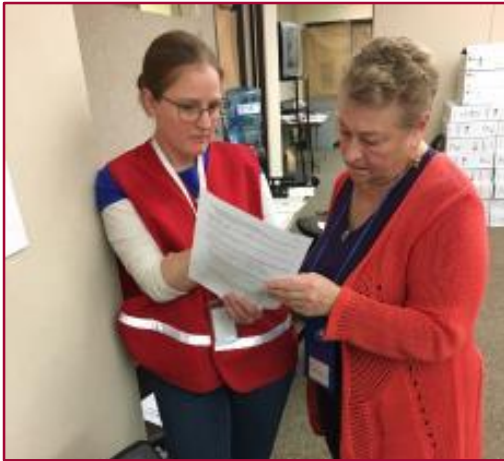
Alan Melnick, MD, MPH, CPH
Director/Health Officer, Clark County Public Health

Washington State Immunization Summit
October 8, 2019

Beginning of the Outbreak



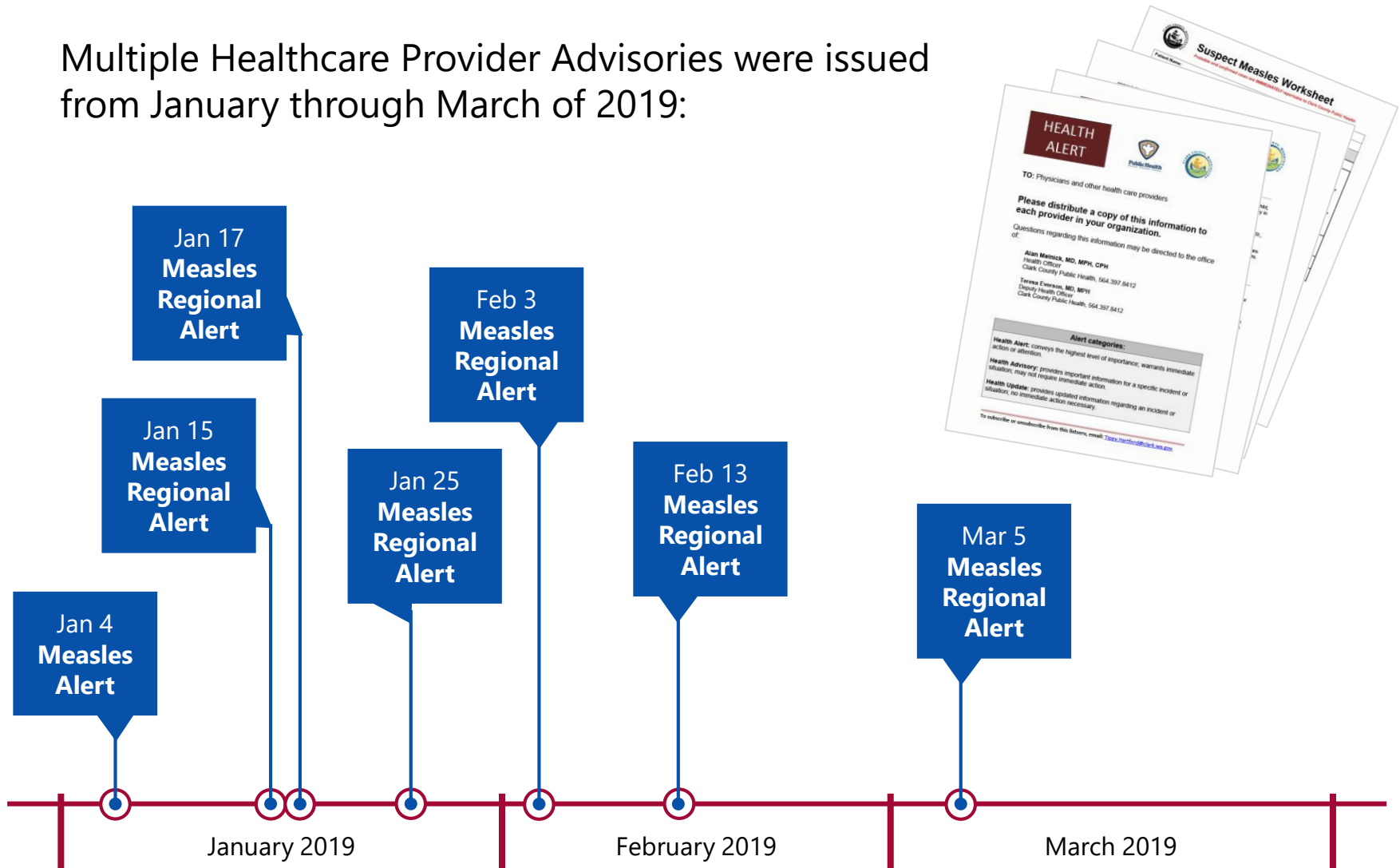
Case Investigation



- **Measles is a notifiable condition.** State law requires physicians and other healthcare providers to notify Public Health of any suspected measles cases.
- Clinicians **collect specimens and coordinate** with Public Health to arrange testing at public health labs.
- Public Health staff **interview the case/parents** of the case to gather information about illness onset and where the case had been the previous 21 days.

Healthcare Provider Advisories

Multiple Healthcare Provider Advisories were issued from January through March of 2019:



Provider Advisory Content

Suspect Measles Worksheet
 Maryland Department of Health

Patient Name: _____ Date of Birth: _____
 Reporting Location: _____ Facility: _____

Considerations for the differential diagnosis of suspected measles:

A. What is the highest temperature recorded?
 B. How long has the fever been present?
 C. Does the patient have any of the following?
 D. Has the patient been in the following?
 E. Has the patient been exposed to anyone with measles?
 F. Exposure to a known measles case?
 G. Contact with a child in a day care or school setting?
 H. Contact with a child in a child care or school setting?
 I. Contact with a child in a child care or school setting?
 J. Contact with a child in a child care or school setting?

Measles and Rubella (MR) are reportable to the State Health Department. Health care providers are encouraged to report cases to the State Health Department. Measles and Rubella are reportable to the State Health Department. Health care providers are encouraged to report cases to the State Health Department.

Additional guidance for health care providers:
 CDC Measles
 CDC Provider Resources for Vaccine Conversations with Patients
 Washington State Department of Health

HEALTH ALERT
 Confirmed measles case in Clark County

Clark County Public Health is investigating a confirmed case of measles in a child. The child, whose identity is being withheld, is currently residing in Clark County. The child was born in the United States.

Public Health has identified one public exposure location:
 • Clark County Health Center, 10000 Old Farm Road, Manassas, VA 20108-1000.

At present, there are no other reported cases. The public is encouraged to remain vigilant and report any cases to the health department.

Clinical presentation:
 Measles is a highly contagious viral infection. The clinical presentation of measles includes:
 • A prodromal phase with symptoms such as fever, cough, coryza, and conjunctivitis.
 • A characteristic rash that typically begins 3-5 days after the onset of symptoms.

HEALTH ALERT

TO: Physicians and other health care providers

Please distribute a copy of this information to each provider in your organization.

Questions regarding this information may be directed to the office at:
 Alan Measles, MD, MPH, CPH
 Health Officer
 Clark County Public Health, 664-307-8412
 Teresa Farnsworth, MD, MPH
 Deputy Health Officer
 Clark County Public Health, 664-307-8412

Alert categories:
 Health Alert: Conveys the highest level of importance, warrants immediate action or attention.
 Health Advisory: Provides important information for a specific incident or situation, may not require immediate action.
 Health Update: Provides updated information regarding an incident or situation, no immediate action necessary.

To subscribe or unsubscribe from this list, email: cases@healthlink.wa.gov

- ✓ Clinical presentation
- ✓ Infection control recommendations
- ✓ Exposure locations
- ✓ Suspect measles worksheet
 - Determination whether case is highly suspect based on clinical presentation, immunization status, exposure and travel history
 - Lab recommendations: specimen collection/storage, lab testing
 - Specimen collection guidelines
 - Instructions for arranging specimen shipping to public health lab
- ✓ Recommendations regarding exclusion, post exposure prophylaxis
- ✓ Sources for more information

Case and Contact Investigation

Case at a large public setting while contagious:

- ✓ Notify public through news releases, website and social media

Case at school while contagious:

- ✓ Identify susceptible students and staff
- ✓ Exclude from school and other public settings for 21 days
- ✓ Actively monitor for 21 days (daily calls)

Case at a health care facility while contagious:

- ✓ Obtain list and contact information of exposed patients and contact them
- ✓ Identify those who are susceptible and actively monitor for 21 days (home quarantine, daily calls)
- ✓ Recommendations on PEP
- ✓ Identify whether anyone else was present/exposed and contact them and actively monitor if indicated

Immunization Recommendations

Post Exposure:

- MMR to eligible unvaccinated if within 72 hours of exposure
- Do not give MMR post 72 hours to unimmunized individuals
- IG within 6 days for:
 - Unvaccinated pregnant women
 - Infants
 - Severely immunocompromised and ineligible for vaccine

Routine Vaccination:

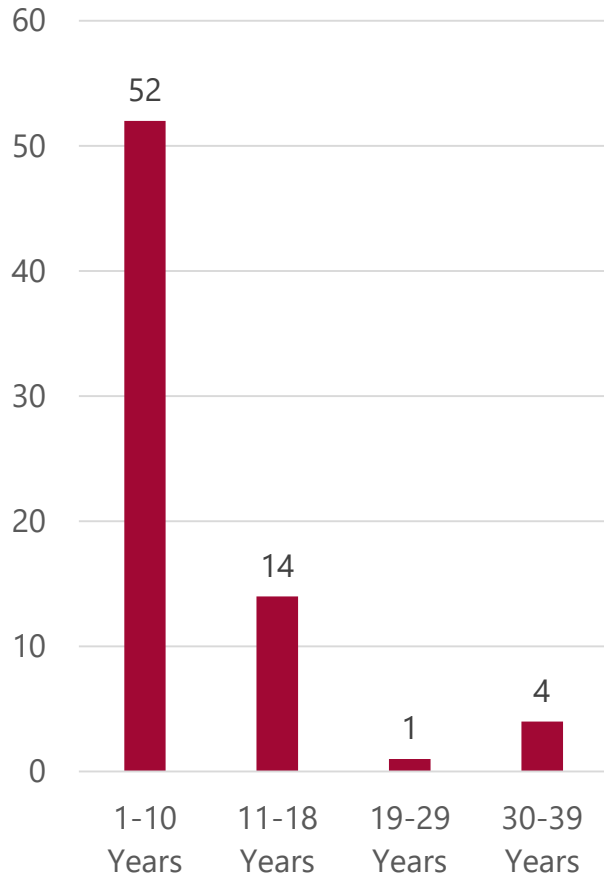
- Do not extend to infants 6-11 months

Case Contacts Investigated

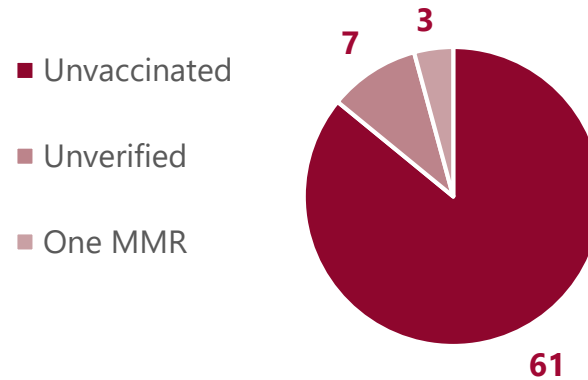
Initial Interviews	>4,137
Monitoring Letters Sent	>3,300
Daily Monitoring	>839

Summary: 71 Cases

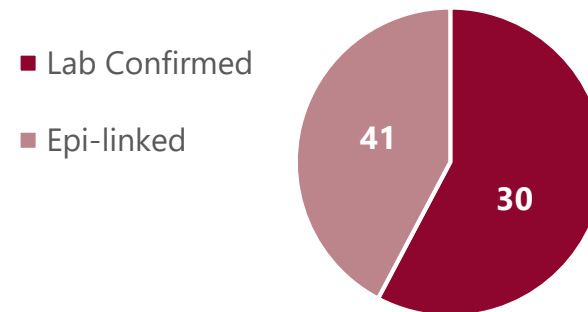
Age Range



Vaccination Status



Confirmation Type



Exposure Sites

54 exposure sites, some with multiple exposure times:

12 health care facilities

15 schools:

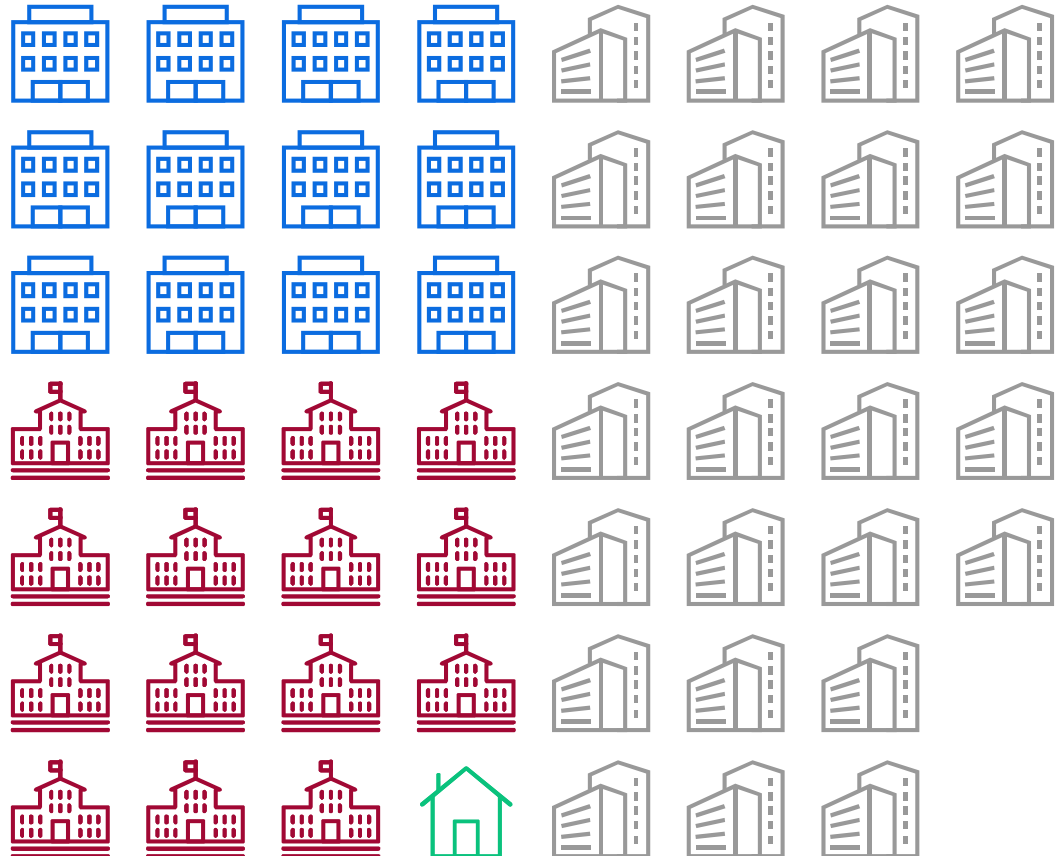
3 public school districts

2 private schools

1 child care facility

26 other locations:

Including churches, grocery stores, Moda Center and Portland International Airport



Public Exposures By Type



96 Exposures:

30 General Public

29 Healthcare Facility

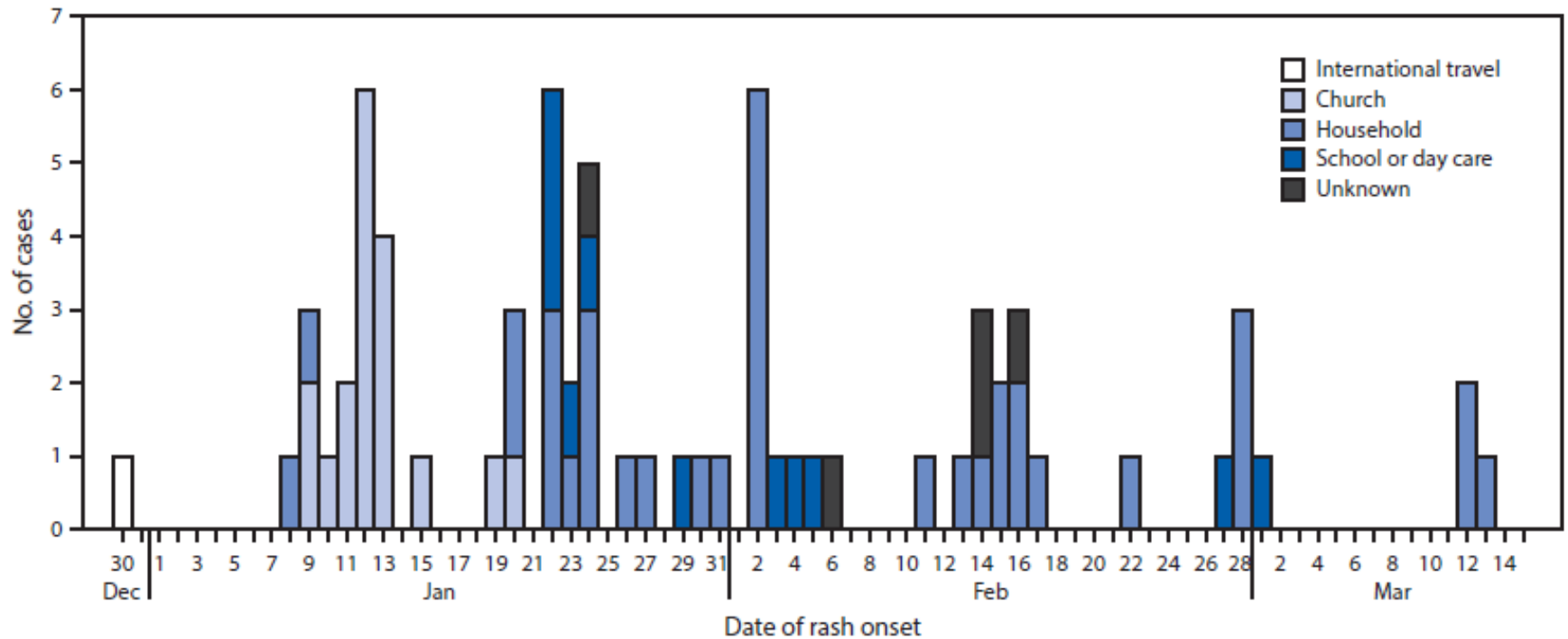
31 School

2 Daycare

4 Workplace

71 Cases in Time

Measles cases, by transmission setting and date of rash onset:
Clark County, WA 12/30/2018 – 3/13/2019



School Exclusions

Public Health excluded susceptible students and staff at 13 public schools in three school districts, and two private schools:



Vancouver Public Schools

138 students excluded



Battle Ground Public Schools

398 students excluded



Cornerstone Christian Academy

20 students excluded



Evergreen Public Schools

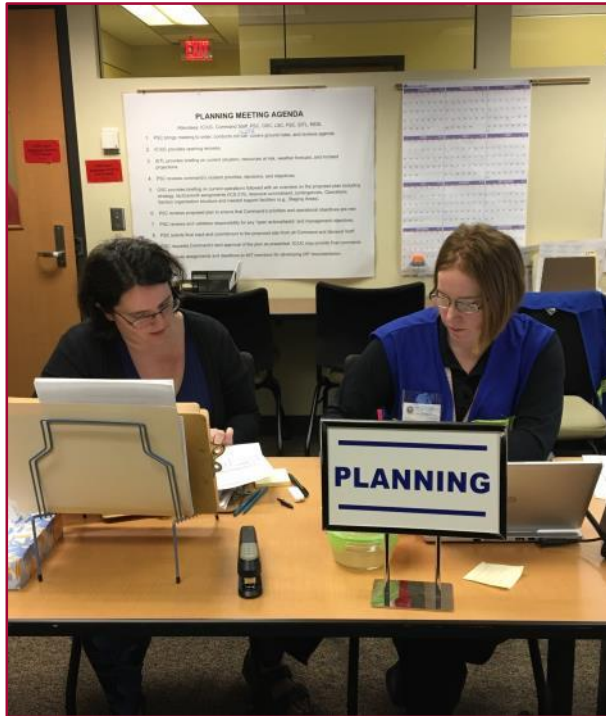
293 students excluded



Slavic Christian Academy

No students excluded

Response: Staffing and Cost



Days in response: 63

Total responders: 237

- Daily average: **40 to 50**
- Clark County Public Health: **89**
- Washington Department of Health: **57**
- Centers for Disease Control and Prevention: **3**
- Medical Reserve Corps: **50**
- Mutual aide, local volunteers, Emergency Management Assistance Compact, Interpreters, others: **38**

Cost: \$864,678.73

Questions?

